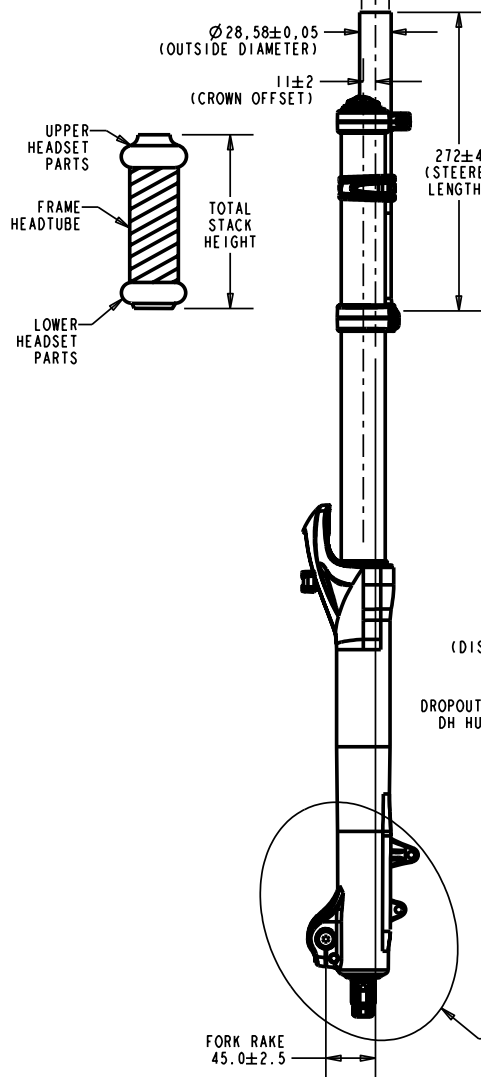
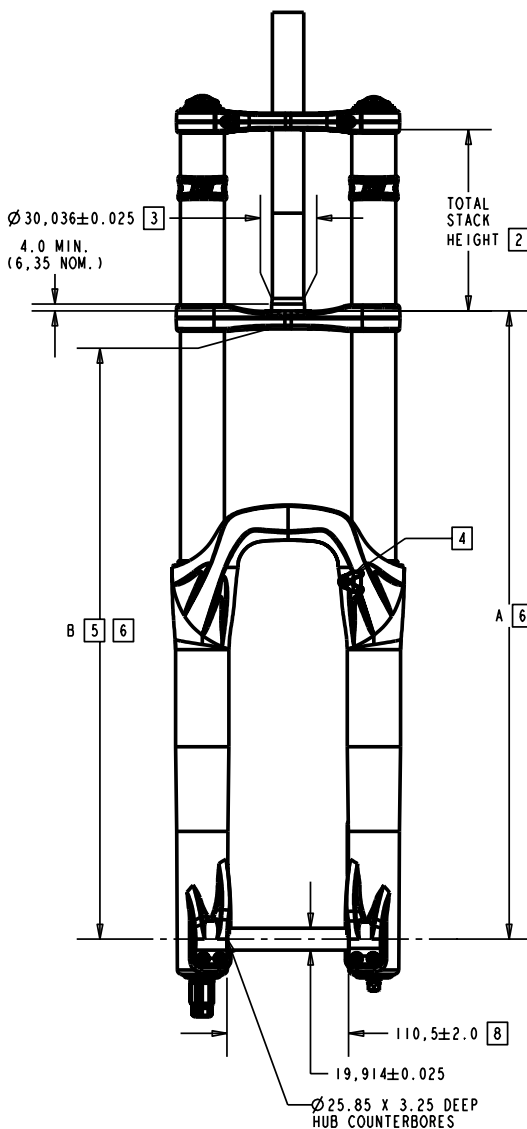


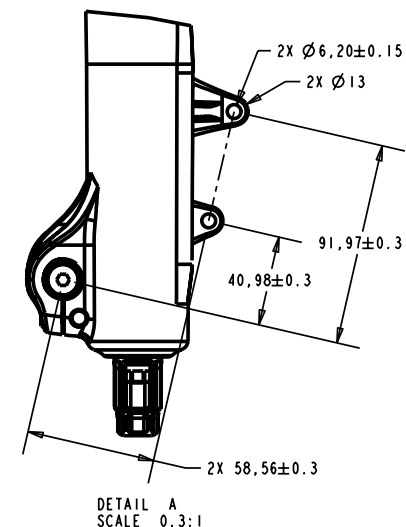
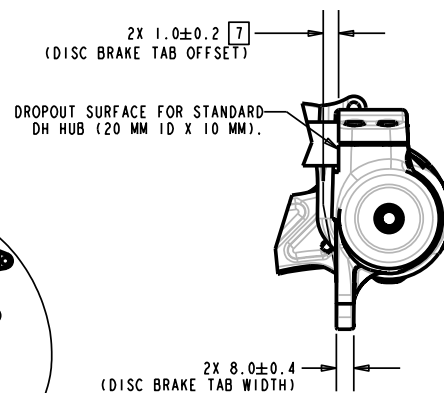
2

— PROPRIETARY —
THIS DOCUMENT CONTAINS CONFIDENTIAL, PROPRIETARY INFORMATION
THAT IS FOX RACING SHOX PROPERTY. DO NOT DISCLOSE TO OR
DUPLICATE FOR OTHERS EXCEPT AS AUTHORIZED BY FOX RACING SHOX.



NOTES: (UNLESS OTHERWISE SPECIFIED)

1. DRAWING NOT TO SCALE: FOX RACING SHOX RESERVES THE RIGHT TO CHANGE SPECIFICATIONS WITHOUT NOTICE.
2. TOTAL STACK HEIGHT = FRAME HEADTUBE LENGTH + TOTAL HEADSET STACK HEIGHT.
FOR TOTAL STACK HEIGHT OF 90-165MM, ORDER FORK MODEL WITH SMALL-LARGE UPPER CROWN.
FOR TOTAL STACK HEIGHT OF 165-181MM, ORDER FORK MODEL WITH EXTRA LARGE UPPER CROWN.
3. INSIDE DIAMETER OF HEADSET CUP MUST NOT BE LESS THAN DIAMETER "D" + 0.30MM.
4. DISC BRAKE HOSE GUIDE AND FASTENER IS INCLUDED WITH FORK.
5. TIRE SIZE LIMIT IS 26X 2.80 INCH WIDE. ANY TIRE SIZE GREATER THAN 2.6 INCH WIDE MUST BE CHECKED WITH FORK FULLY COMPRESSED AND HAVE A MINIMUM OF 6.0MM "TIRE TO CROWN" CLEARANCE.
6. DIMENSIONS IN PARENTHESIS ARE WITH FORK FULLY COMPRESSED.
7. DIMENSION IS FROM INSIDE OF AXLE DROPOUT FACE TO INSIDE OF DISC BRAKE MOUNT TABS.
8. FORK USES STANDARD 20MM ID X 110MM WIDE DH HUB. AXLE IS INCLUDED WITH FORK.
9. FORK IS ONLY TO USE DISC BRAKES. FORK IS DESIGNED TO USE DH-SIZE BRAKE SYSTEMS (200-205 MM ROTORS). DISC BRAKE BOLT PATTERN USES:
XC CALIPER
XC CALIPER MOUNT FOR INTERNATIONAL XC MOUNT PATTERN
DH SIZE ROTOR (200-205MM OUTSIDE DIAMETER)
10. FOX FORK ARE NOT TO BE USED ON ANY TANDEM BICYCLE.



A

	ALL 7" (178mm) TRAVEL 40 FORK MODELS	ALL 8" (203mm) TRAVEL 40 FORK MODELS
A ±5.0MM	545.8 (367.8)	571.2 (368.2)
B ±5.0MM	529.3 (351.3)	554.7 (351.7)

ITEM NO.	QTY.	PART NUMBER	DESCRIPTION	MATERIAL SPEC
UNLESS OTHERWISE SPECIFIED DIMENSIONS ARE IN MM.			PER ANSI Y14.5M 1994	
TOLERANCES ARE:			APPROVALS	DATE
DECIMALS .X ± 0.25			DWN. BY C. HUGHES	27JUL04
ANGLES ± 1°			CHK. BY B. BECKER	07SEP04
THIRD ANGLE PROJECTION			ENG. B. BECKER	02JUL04
MFG.			ADD.	
DO NOT SCALE DRAWING			SIZE A	PART NO.
			PLOT SCALE 0.04:1	SHEET 1 OF 1

FOX Factory, Inc.
130 Hangar Way, Watsonville, CA 94076 USA, Ph 831-768-1100, Fax 831-768-9312

2005 FOX 40 FORX
USER SPECIFICATION